



## BETTER INFORMED, BETTER CARE

Clarity is an online platform that provides operational and usage information from the Zen-O™ and Zen-O lite™ portable oxygen concentrators - allowing home oxygen providers to:

- Monitor device performance and carry out predictive maintenance
- Optimise assets, ensuring patients have the right device
- Manage patient adherence to prescription
- Track device location using GPS and GSM technologies



## REMOTE MONITORING SUPPORT

Clarity can be securely accessed on any device, anywhere in the world at any time. Clarity provides data that allows home oxygen providers to carry out predictive maintenance and proactive patient care. Its user friendly platform and customizable dashboard delivers information most valuable to you.

## ASSET OPTIMISATION

Use the data to manage your assets and to ensure your patients have the correct device for their therapy.

## CLINICAL MONITORING

Clarity provides device usage information that enables providers to encourage patient adherence to prescription and avoid costly hospital re-admissions.

## SECURITY

Connected Zen-O™ and Zen-O lite™ devices and servers are equipped with best in class security protocols with data encryption during transmission from the devices to the Clarity platform.

## PATIENT ACCESS

Patients and family members can have access to Clarity, bringing both extra assurance and a wider network of support.

## REPORTING

Easily generated reports are available on a single device or your entire fleet.

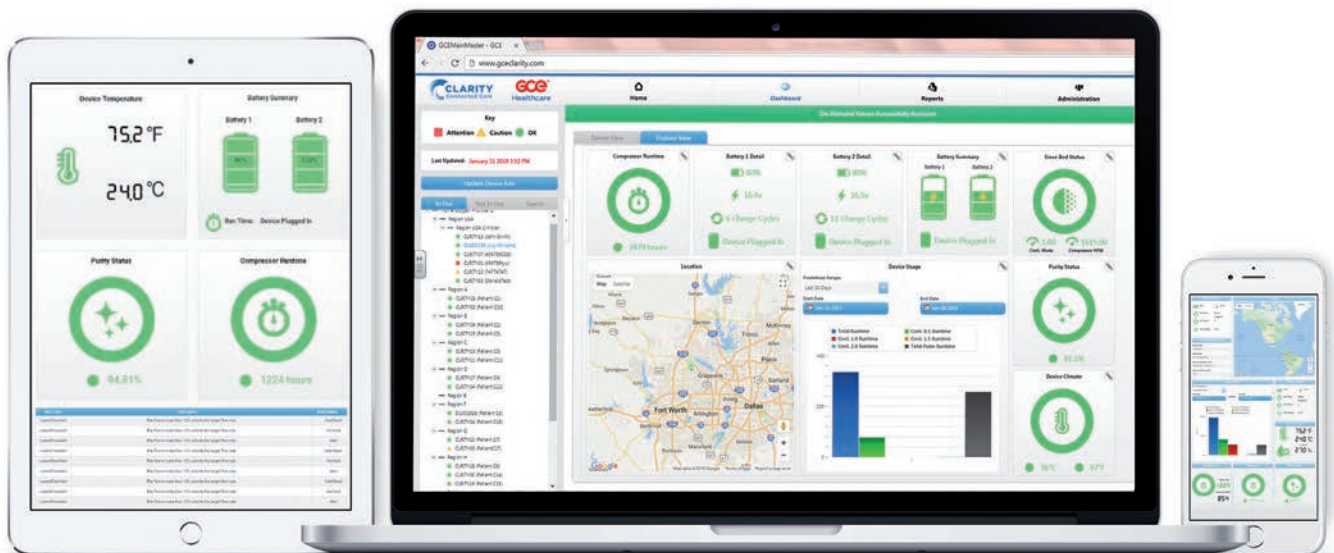
## ALARMS

Using simple traffic light system alarms, home oxygen providers can see the performance of their assets and detect any potential issues before they arise.

 **Attention**  **Caution**  **OK**

## ASSET MANAGEMENT

GPS and GSM technologies on all connected Zen-O™ and Zen-O lite™ devices helps you determine the location of your assets.



GCE Group  
[www.gcehealthcare.com/clarity](http://www.gcehealthcare.com/clarity)

GCE Healthcare is part of GCE Group, a world leader in gas control equipment.

Doc. No. 735100001220, Edition 1/2019. Alterations are subject to change without notice. 13092019ea © 2019

**GCE**<sup>®</sup>  
Gas Control Equipment