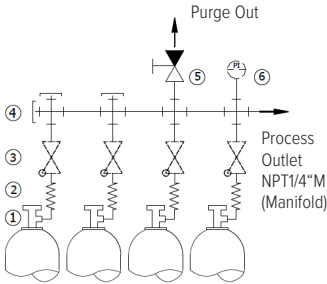


DRUVA®PUR EXTENSION HEADER KITS FOR MANIFOLD

EXTENSION | BRASS CHROME PLATED / STAINLESS STEEL | 20M³ SERIES | HIGH PRESSURE RANGE

This extension header kits are used to increase number of high pressure inlet ports for manifolds in gas supply systems for pure, inert, flammable, oxidising gases and gas mixtures up to gas quality 6.0.

Flow Schematic EPLCP0C | ESLCP0C



- 1 – Gas Cylinder
- 2 – Coil (needs to be ordered separately)
- 3 – Check Valve
- 4 – Connection Piece
- 5 – Vent Valve
- 6 – Gauge (or Pressure Transmitter) (or Contact Gauge)

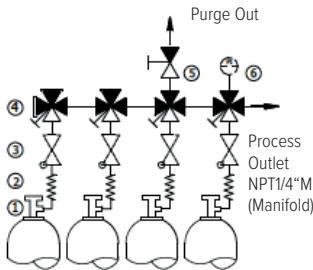
TECHNICAL SPECIFICATION

Extension Header Kits were used to connect more than one gas cylinder on each side of the manifold. It can consist of diaphragm shut-off valve, tubing, inlet and outlet connection. Upon request it can be equipped with check valves, gauges and vent valves, pressure transmitter and contact gauges. They can be delivered with up to 4 inlets. The Extension Header Kits are designed for safe handling of high purity gases.

SPECIAL FEATURES

- > Up to four additional inlet ports are possible
- > Variable, configurable system
- > Extension Headers are optional equipped with manual actuated diaphragm valve, non return valve, gauge, contact gauge, pressure transmitter
- > Complete kits are available
- > Valves - developed, tested and produced in accordance with relevant sections of ISO 10297:2015 (including O₂ ignition test for main valve)
- > Non Return valves -The special seat seal and the use of selected gas-wetted parts allow the use with Oxygen up to 300 bar
- > Electrostatic chargeability test
Fulfills requirements according to ISO 80079-36, IEC TS 60079-32-1 and German TRGS 727
Usable in EX- areas zones 1 and 2 for gases with explosion risk group I, IIA, IIB, IIC

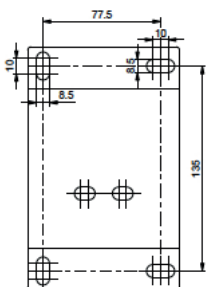
Flow Schematic EPLDSMF | ESLDSMF



- 1 – Gas Cylinder
- 2 – Coil (needs to be ordered separately)
- 3 – Check Valve
- 4 – Shut-off Valve (1xIN; 3xOUT)
- 5 – Vent Valve
- 6 – Gauge (or Pressure Transmitter) (or Contact Gauge)

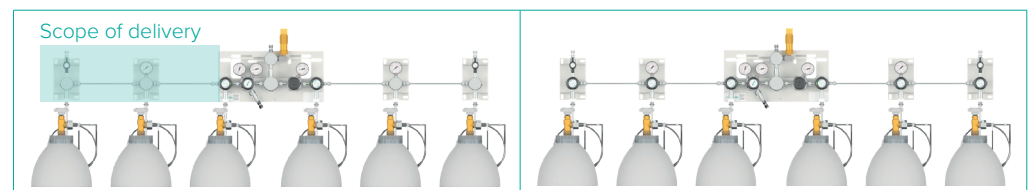
| TECHNICAL DATA | |
|----------------------------------|--|
| Max. working pressure | 300 bar |
| Working temperature | - 20 °C to 60°C |
| Nominal Flow Rate | 20m ³ / h |
| Material: | |
| Body (PUR Line) | EPLCP0C/EPLDSMF – Brass chrome plated (CW614N) |
| Body (SST Line) | ESLCP0C/ESLDSMF – Stainless Steel (1.44.4) |
| Dimensions LxDxH (max): | L030 (recommendet for gas cylinders) L100 (recommendet for gas bundles) |
| 1 inlet | 333 x 67 x 220 |
| 2 inlets | 630 x 110 x 220 |
| 3 inlets | 928 x 110 x 220 |
| 4 inlets | 1226 x 110x 220 |
| Specials: | Check Valve – Type CV300 Vent Valve – Type MVA530LG Check Valve + Vent Valve |
| Gauge Type: | Bourdon Tube Inductiv Contact I1 Reed Contact R5 Pressure Transmitter Ex Pressure Transmitter Non-Ex |
| TECHNICAL DATA – TUBE | |
| Material | Stainless Steel 1.4404 / 316L |
| Outside Diameter | 1/4" |
| Wall thickness | 0,035" |
| Gas wetted surface finish | Outer surface Ra<=1,0 µm Inner surface Ra<=0,8 µm |
| Cleaning | free of oil and grease acc. to ASTM G93 11.4.3.1 - Level AA |

Drilling theme



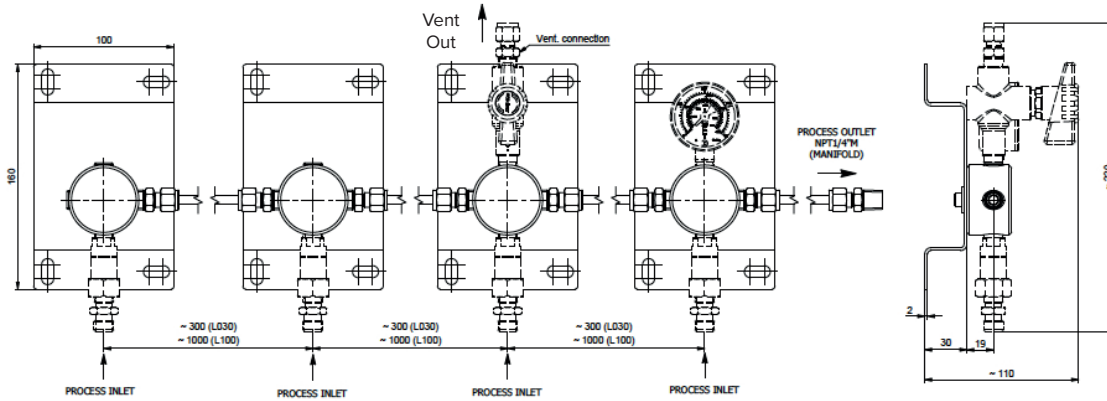
Extension with Connection Piece

Extension with 4-port diaphragm shut-off valve

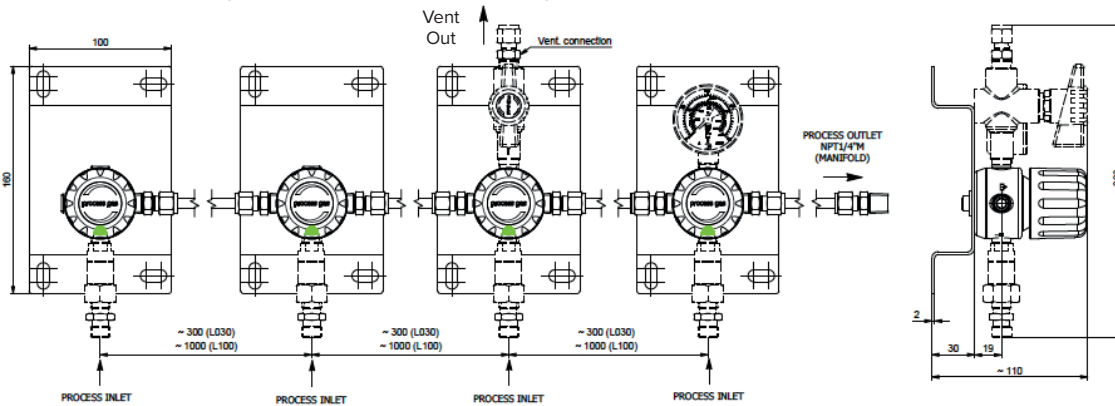


VARIANTS

Brass chrome plated – Type EPLCP0C | Stainless Steel – Type ESLCP0C



Brass chrome plated – Type EPLDSMF | Stainless Steel – Type ESLDSMF



ORDER CODE

Example Extension Header | PUR Line | Brass Chrome Plated/Stainless Steel | 20 m³ Series | High Pressure Range

| EPLCP0C ESLCP0C | | L | 2 | V | GX | 01 | L100 | N14F | N14F |
|--------------------|-------------|---------------------|-----------------|----------------------------|----------------|-------------------------------|--------------|--------------------------|----------------------------------|
| EPLDSMF ESLDSMF | | Porting Orientation | Extension Level | Specials | Inlet Pressure | Pressure Indicator | Length | Process Inlet Connection | Vent Connection |
| R | Inlet right | 1 | one inlet | 0 no specials | D1 12 bar | 01 Without (plugged) | L030 300 mm | M14M METRIC 14X1,5 MALE | see list of possible connections |
| L | Inlet left | 2 | two inlets | C Check Valve | F4 60 bar | BT Bourdon Tube gauge | L100 1000 mm | N14F NPT1/4 INCH FEMALE | |
| | | 3 | three inlets | V Vent Valve | FX 200 bar | I1 Inductive Contact Gauge I1 | | W2ML W21,8x1/14" MALE LH | |
| | | 4 | four inlets | W Check Valve + Vent Valve | GX 300 bar | R5 Reed Contact Gauge R5 | | W2MR W21,8x1/14" MALE RH | |
| | | | | | | PT Pressure Transmitter | | | |
| | | | | | | PX Pressure Transmitter Ex | | | |

Order code (as described above) without special characters or spaces! Example for a complete order code EPLCPOCL2VGX01L100N14FN14F

LIST OF CONNECTIONS

N14F - NPT1/4 INCH FEMALE

- M06B - COMPRESSION METRIC 6 MM BRASS
- M08B - COMPRESSION METRIC 8 MM BRASS
- M10B - COMPRESSION METRIC 10 MM BRASS
- M12B - COMPRESSION METRIC 12 MM BRASS
- M06S - COMPRESSION METRIC 6 MM SS
- M08S - COMPRESSION METRIC 8 MM SS
- M10S - COMPRESSION METRIC 10 MM SS
- M12S - COMPRESSION METRIC 12 MM SS

- IX4B - COMPRESSION IMPERIAL 1/4 INCH BRASS
- IX6B - COMPRESSION IMPERIAL 3/8 INCH BRASS
- IX8B - COMPRESSION IMPERIAL 1/2 INCH BRASS
- IX4S - COMPRESSION IMPERIAL 1/4 INCH SS
- IX6S - COMPRESSION IMPERIAL 3/8 INCH SS
- IX8S - COMPRESSION IMPERIAL 1/2 INCH SS



Link to online product configurator