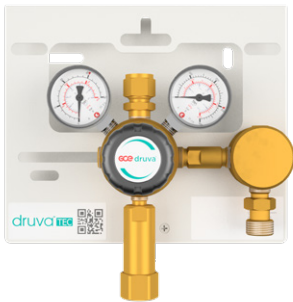


**DRUVA® TEC MANIFOLD – MTMHOXS0 | MTMHEXS0 | MTMHXS0**  
 MANIFOLD | TEC LINE (BRASS) | 100 m³ SERIES | HIGH PRESSURE VERSION | 1 INLET | SINGLE STAGE



- HO VERSION – HIGH PRESSURE REGULATOR WITH FKM-SEAL
- HE VERSION – HIGH PRESSURE REGULATOR WITH EPDM-SEAL
- HS VERSION – HIGH PRESSURE REGULATOR WITH SST VALVE AND EPDM-SEAL *(ONLY FOR MISON)*

Manifolds for use in supply systems for industrial, inert, flammable, oxidizing gases and gas mixtures.  
 Not suitable for Acetylene, corrosive and/or toxic gases and their mixtures.



- Type:** MTMHxXS000
- Option 00**
- no valve at inlet
  - no valve at outlet
- Special 0**
- no special

**SPECIAL FEATURES**

- > Metallic sealing of the shut-off valves and pressure regulator against atmosphere by Elgiloy/Hastelloy diaphragms.
- > No increase in outlet pressure with decreasing inlet pressure due to the use of a pressure reducer with inlet pressure compensation
- > Very compact design
- > Easy installation due to splitted plates for the manifold

**TECHNICAL DATA – MANIFOLD**

|   |   |
|---|---|
| <b>Working temperature:</b>   | -40 °C to +60 °C  |
| <b>Inlet pressure range:</b>  | 60   200   300 bar  |
| <b>Outlet pressure range:</b>   | 10   20   40   100 bar (adjustable)   |
| <b>Nominal flow:</b>  | 100 m³/h (N₂) according to ISO 7291 at 20 bar outlet pressure and 41 bar inlet pressure |
| <b>Gewicht</b>  | 5,92 (Weight refers to the basic version of the manifold)                               |
| <b>Inlet - &amp; outlet connection:</b>                                       | see ordering information  |
| <b>Leakage rate seat:</b>   | max. 5 x 10 <sup>-6</sup> mbar l/s (Helium)   |
| <b>Leakage rate outside:</b>  | max. 5 x 10 <sup>-6</sup> mbar l/s (Helium)   |
| <b>Pressure gauges rates (in brackets- pressure rates):</b>                   | 18 (10)   40 (20)   65 (40)   80 (60)   160 (100)   315 (200) 400 (300) bar             |
| <b>Cracking pressure relief valves (in brackets – Outlet pressure rates):</b> | 15 (10)   30 (20)   60 (40)   140 (100) bar   |

**TECHNICAL DATA – REGULATOR**

LTMH0SJ | LTMHESJ  
 see separate data sheet

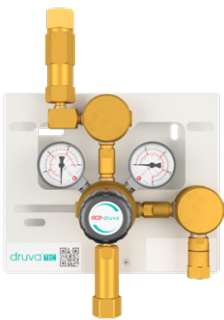
**TECHNICAL DATA – SHUT- OFF VALVES**  
 VTMDSMIR – 4 PORT (3X INLET – 1X OUTLET)  
 VTMDSMFR –4 PORT (1X NLET – 3X OUTLET)  
 see separate data sheets

**TECHNICAL DATA – MOUNTING PLATES MANIFOLD**

|  |   |
|--|---|
| <b>Ground plate:</b>   | Stainless Steel (polished)<br>Option to secure arrestor cable of hoses with hook on ground plate.<br>Grounding bolt<br>Cut outs on top and bottom allows installation |
| <b>Dimensions ground plate:</b><br>(Height x Width x Length) | 194 x 30 x 230 mm   |
| <b>Front plate:</b>  | Stainless Steel (polished)<br>Cut outs for replacement of gauges<br>Free space for additional installer label (e.g. remark for next maintenance)                      |
| <b>Dimensions front plate:</b><br>(Height x Width x Length)  | 194 x 30 x 230 mm   |
| <b>Marking on panel:</b>                                     | Product range label<br>QR-Code – Link to the product overview on the website and from there the operating instructions (IFU) can be accessed                          |

**TECHNICAL DATA – SAFETY VALVE**

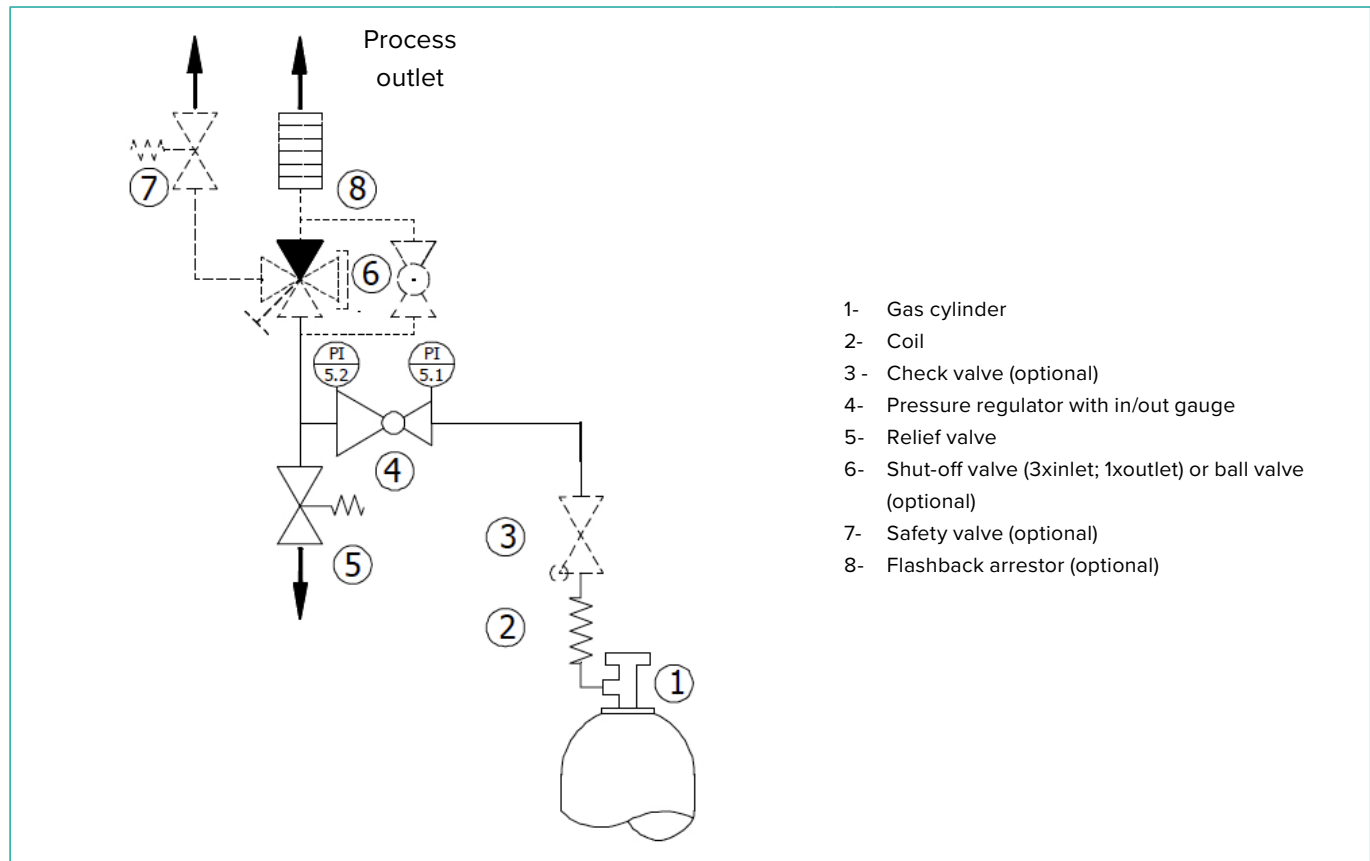
|                          |   |
|--------------------------|---|
|                          | Spring loaded according P.E.D. 2014/68/EU and AD2000 (A2)                     |
| <b>Opening pressure:</b> | 15   30   60 bar  |
| <b>Material:</b>         | Housing and metallic parts made of brass, pressure spring made of alloy steel |
| <b>Seat and seal:</b>    | FKM / EPDM  |



- Type:** MTMHxXS00U
- Option 00**
- no valve at inlet
  - no valve at outlet
- Special U**
- Check valve at inlet
  - Safety valve at outlet

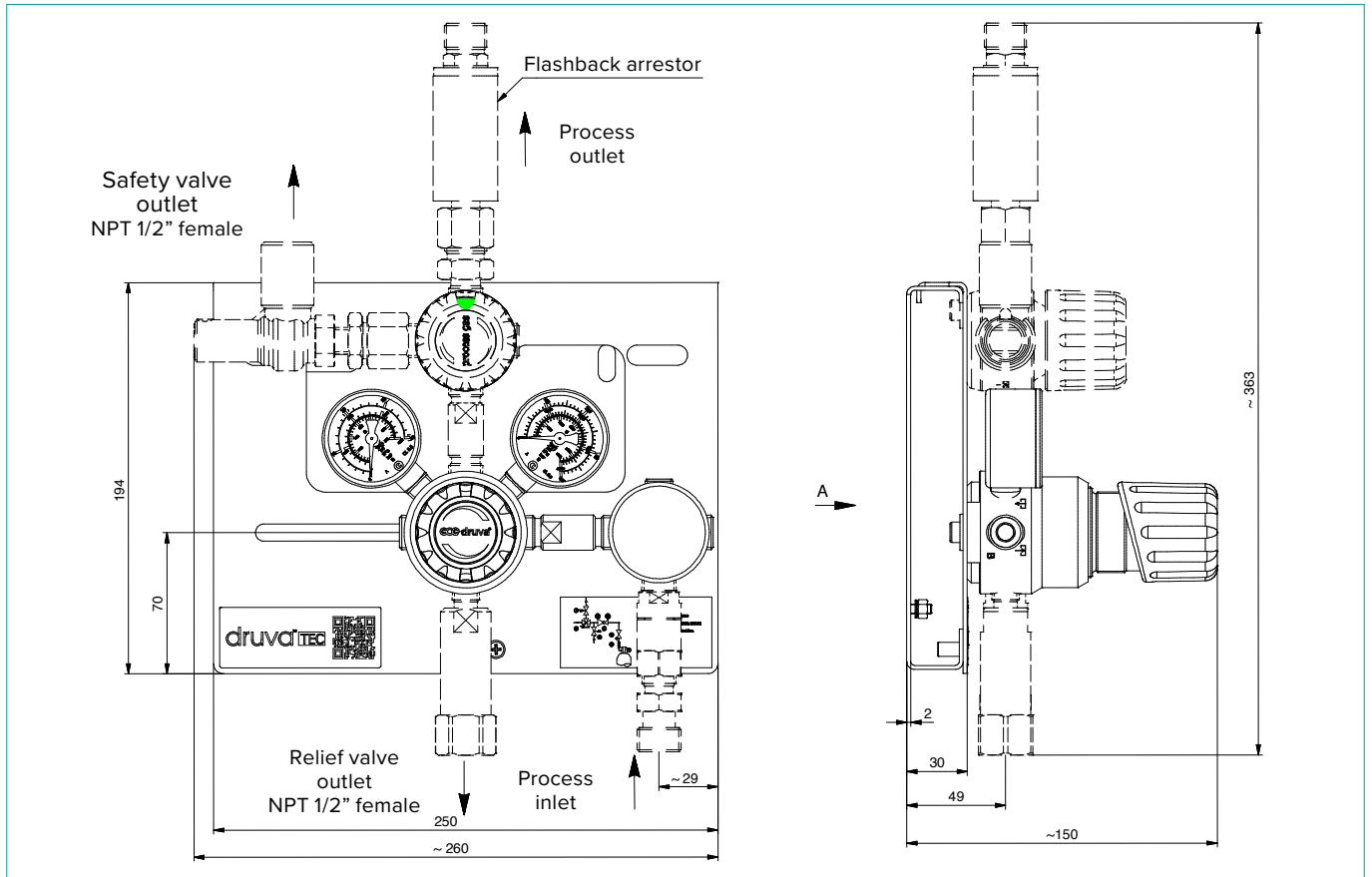
| TECHNICAL DATA – BALL VALVE UP TO 20 BAR                                   |                                 |
|--|---------------------------------|
| Max. working pressure:   | 20 bar                          |
| Material gas wetted parts:   |                                 |
| Body   | Brass nickel plated             |
| Ball   | Brass hard chrome plated        |
| Ball seal  | PTFE                            |
| Gearshift seal   | FKM / EPDM                      |
| Nominal width (free passage):  | 13 mm                           |
| TECHNICAL DATA – BALL VALVE UP TO 40 BAR – NOT SUITABLE FOR OXYGEN         |                                 |
| Max. working pressure:   | 40 bar                          |
| Material gas wetted parts:   |                                 |
| Body   | Stainless Steel                 |
| Ball   | Stainless Steel                 |
| Ball seal  | PTFE                            |
| Gearshift seal   | PTFE                            |
| Nominal width (free passage):  | 15 mm                           |
| TECHNICAL DATA – CHECK VALVE   |                                 |
| Max. Working pressure:   | 300 bar                         |
| Pressure loss at inlet pressure 41 bar and flow rate 100m <sup>3</sup> /h: | 3,8 bar                         |
| Material gas wetted parts:   |                                 |
| Valve body   | Brass                           |
| Filter   | Sinter bronze SIKA-B            |
| Valve seat   | Silicon nitride ceramic (Si3N4) |
| Spring   | Stainless Steel 316 L           |

TECHNICAL DRAWING – FLOW SCHEMATIC

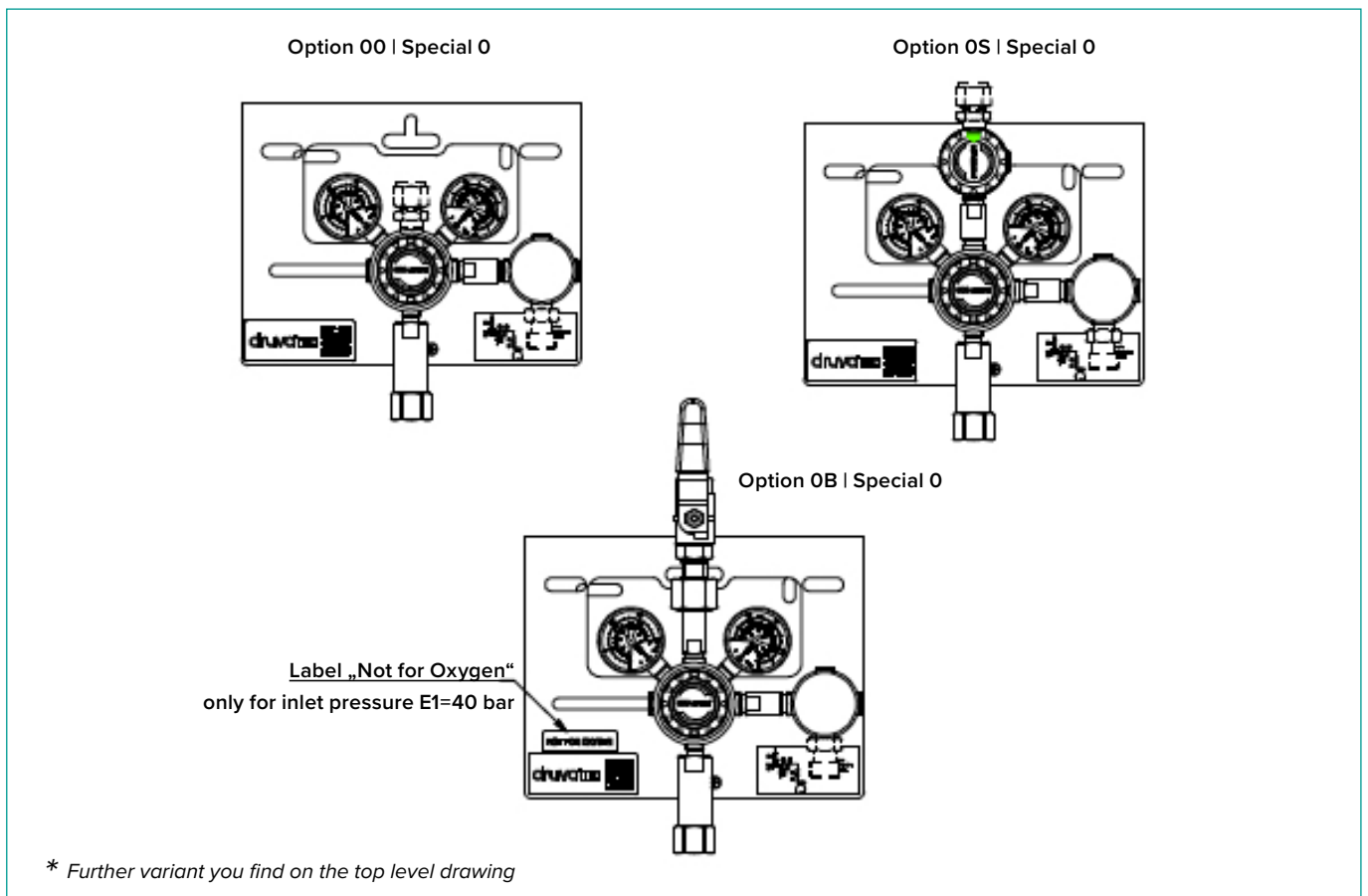


FOR FLOW CURVES PLEASE REFER TO – Data-FlowCurves-EN

TECHNICAL DRAWING – DIMENSIONS



TECHNICAL DRAWING– STANDARD VARIANTS \*



ORDERING INFORMATION – MTMH0XS0 | MTMHXS0 | MTMHXSX0

Example for a manifold | TEC Line | Brass | Mid Flow (100m³) | Single Stage

| MTMH0X<br>MTMHX<br>MTMHXS | S                                   | 00  | C                    | FX                    | EZ                            | BT                            | BT                                   | N14F  | N38F<br>3/8" NPT<br>female | 0001 |
|---------------------------|-------------------------------------|---|----------------------|-----------------------|-------------------------------|-------------------------------|--------------------------------------|---|----------------------------|------|
| Stages                    | Options                             | Specials  | Inlet pressure (bar) | Outlet pressure (bar) | Inlet pressure gauge          | Outlet pressure gauge         | Process inlet connection             | Process outlet connection                           | Purge connection           |      |
| S single stage            | 00 HP no valve<br>LP no valve       | 0 without   | F4 60                | D2 10                 | BT Bourdon Tube Gauge         | BT Bourdon Tube Gauge         | N14F 1/4" NPT female                 | Further connections can be found in the table below | 0001 without (plugged)     |      |
|                           | 0S HP no valve<br>LP shut-off valve | C Check valve   | FX 200               | EZ 20                 | I1 Inductive contact gauge I1 | I2 Inductive contact gauge I2 | N38F 3/8" NPT female                 |   |                            |      |
|                           | 0B HP no valve<br>LP Ball valve     | F Safety Device Flammables                              | GX 300               | E1* 40                | R5 Reed contact gauge R5      | R2 Reed contact gauge R2      | E2MR G3/8" male EN560 right          |   |                            |      |
|                           |                                     | G Check Valve & Safety Device Flammables                |                      | F2** 100              |                               | I1 Inductive contact gauge I1 | W2ML Whitworth 21.8x1/14" male left  |   |                            |      |
|                           |                                     | H Check Valve & Safety Valve & Safety Device Flammables |                      |                       |                               | R5 Reed contact gauge R5      | W2MR Whitworth 21.8x1/14" male right |   |                            |      |
|                           |                                     | N Safety Device Oxy/Air                                 |                      |                       |                               |                               | W3ML Whitworth 30x2 male left        |   |                            |      |
|                           |                                     | P Check Valve & Safety Device Oxy/Air                   |                      |                       |                               |                               | W3MR Whitworth 30x2 male right       |   |                            |      |
|                           |                                     | Q Check Valve & Safety Valve & Safety Device Oxy/Air    |                      |                       |                               |                               |                                      |   |                            |      |
|                           |                                     | S Safety valve  |                      |                       |                               |                               |                                      |   |                            |      |
|                           |                                     | U Check valve & safety valve                            |                      |                       |                               |                               |                                      |   |                            |      |
|                           |                                     | Y Safety Device Flammables & Safety Valve               |                      |                       |                               |                               |                                      |   |                            |      |
|                           |                                     | Z Safety Device Oxy/Air & Safety Valve                  |                      |                       |                               |                               |                                      |   |                            |      |

HP= High pressure | LP= Low pressure

\* Not available in combination with option ball valve at outlet for Oxygen | \*\* Not available in combination with option ball valve at outlet

Order code (as described above) without special characters or spaces! Complete Order Code: **MTMH0XS00CFXEZBTBTN14FN38F0001**

Process outlet connection

- N38F - NPT 3/8 inch female
- G12F - G 1/2 inch female
- E3MR - G1/2" male EN560 right
- E3ML - G1/2" male EN560 left
- E5MR - G3/4" male EN560 right
- M12B - Compression fitting 12 mm Brass
- M15B - Compression fitting 15 mm Brass
- M18B - Compression fitting 18 mm Brass
- M12S - Compression fitting 12 mm Stainless Steel
- M15S - Compression fitting 15 mm Stainless Steel

- M18S - Compression fitting 18 mm Stainless Steel
- M25S - Compression fitting 25 mm Stainless Steel
- IX8B - Compression fitting 1/2 inch Brass
- I10B - Compression fitting 5/8 inch Brass
- I12B - Compression fitting 3/4 inch Brass
- I14B - Compression fitting 7/8 inch Brass
- IX8S - Compression fitting 1/2 inch Stainless Steel
- I12S - Compression fitting 3/4 inch Stainless Steel
- I16S - Compression fitting 1 inch Stainless Steel
- DM21 - Tube 21,3 mm

Availability of brass fittings depending on pressure and size.

Pay attention to the maximum approved pressure of your pipework.



Link to online product configurator